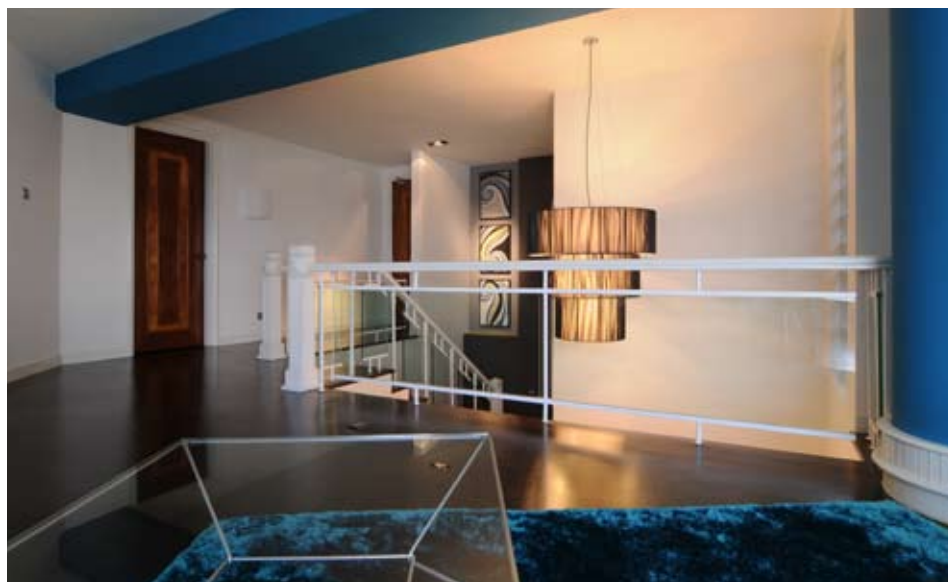


# Just a little Nip/Tuck



There comes a time when every home, every space, every 'you' needs a makeover, not a major one but just a tiny bit. But it is also a challenge in itself, one mistake and everything will take a downturn. So, consulting with an expert helps.

We are all born perfect. However, as we age, we begin to see the signs of time and ask ourselves the big question. "Is it time for a new anti-aging skin regime or an industrial strength makeover?"

This space was born with beautiful bone structure, the Angelina Jolie of property. So, why fool around with perfection. Highlight and accentuate its original brilliance was the designer's vision.

So, like a makeup artist wielding his brush, the designer washes this space in elegant metallic curtains and upholstery fabrics; custom designed sofas, coffee & end tables and brings in sleek practical loose furniture and blankets the space in the most interesting and creative

feature paint designs. Designer spot and pendant lights illuminate the design features and divides the environment into different and unique usable spaces.

Like diamond jewellery completes a modern woman's look, custom designed artwork was incorporated to establish a seamless flow of style throughout the space and make the statement. "Have you had a bit of work done? You look fabulous!"

这奇异、超然的空间始于完美的屋身架构。如何提升完美? 此案的设计师接下了严峻的挑战, 着手于实现与强化其建筑原有的辉煌。

正如技艺高超的化妆师运用其粉刷, 设计师采用了高级优雅的金属质布料来定制沙发与窗帘, 弹起了空间的亮度, 再配

以时尚的饰物与创意的墙色, 诠释了现代高品质生活的质感。巧妙设置的局部照明与各式设计师吊灯或桌灯, 将空间划分成不同气氛与功能的区域。

正如完美的变装, 最后要配上的就是亮眼的钻石珠宝。定制的艺术品完美无瑕地被编入整个空间风格, 即负起了点缀的重任, 也为主人的品味做出有力的声明, 完美的变装终于完成。



**INTERIOR DESIGN FIRM**  
DREAM HOME LAND SDN BHD

**PROFILE**  
5-07

**LOCATION**  
JALAN TUN ISMAIL,  
KUALA LUMPUR

**BUILT SIZE (SQ FT)**  
3,583

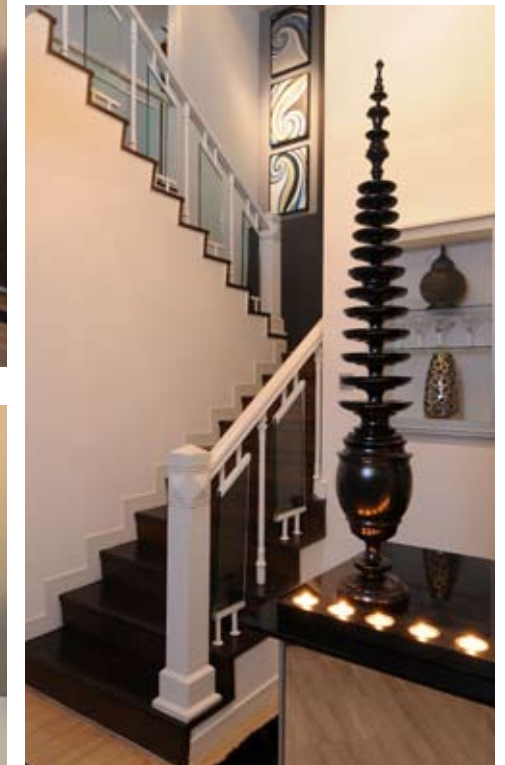
**DESIGN CONCEPT**  
MOOD

**PLAN**  
4 BEDROOMS +  
5 BATHROOMS





INTERIOR  
DESIGN FIRM  
DREAM HOME LAND  
SDN BHD

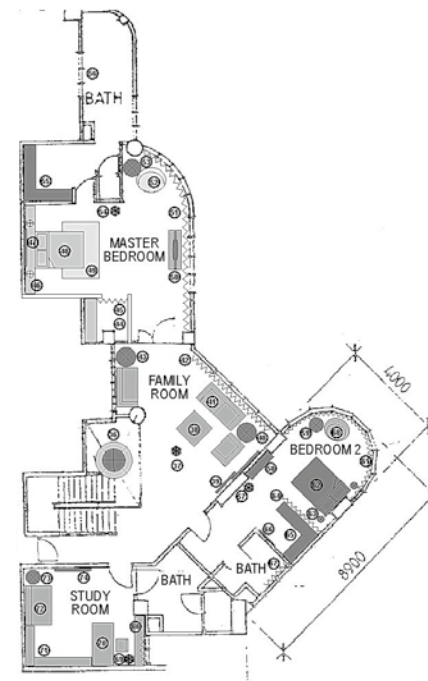


Different shades placed in selected places, in this case the staircase, give the space more dimension.

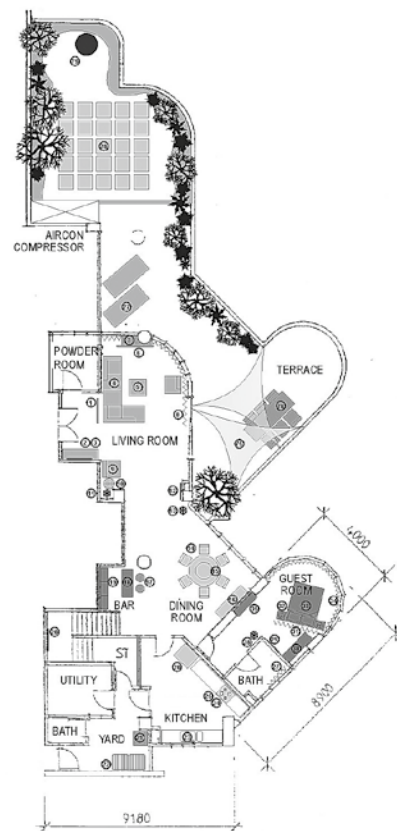
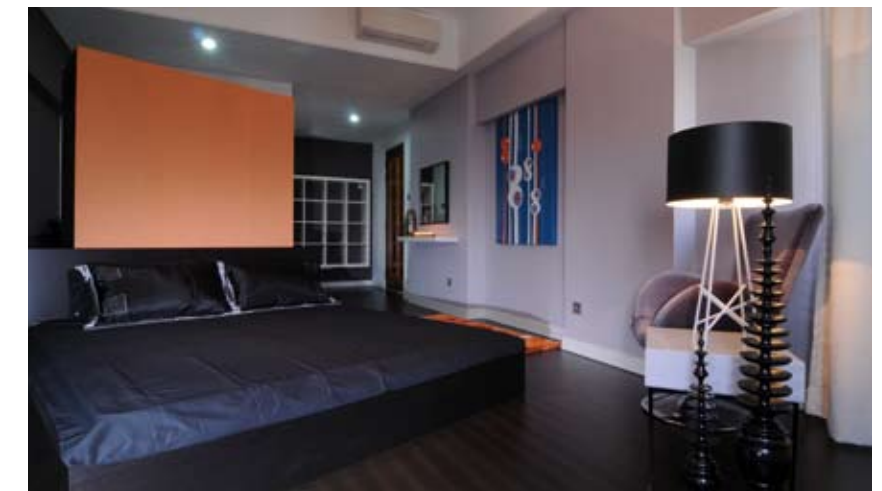




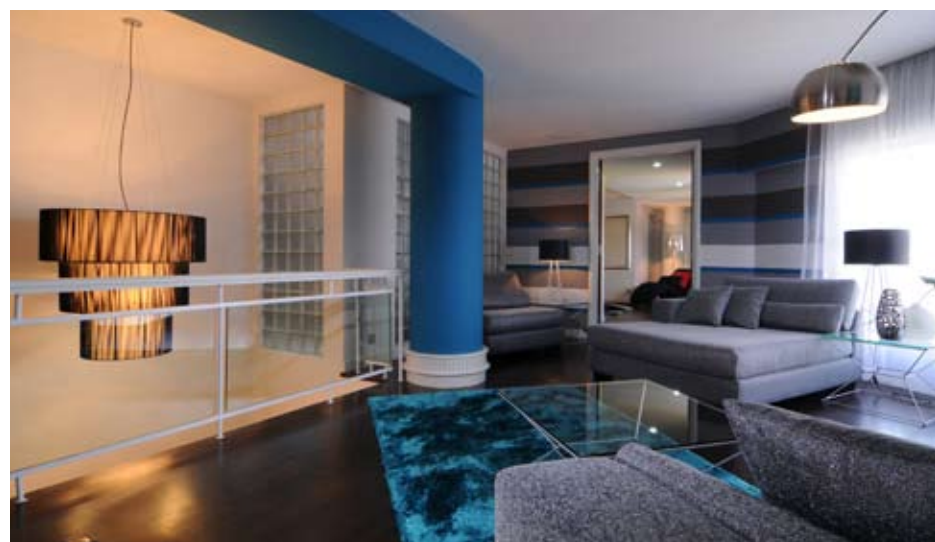
INTERIOR DESIGN FIRM DREAM HOME LAND SDN BHD



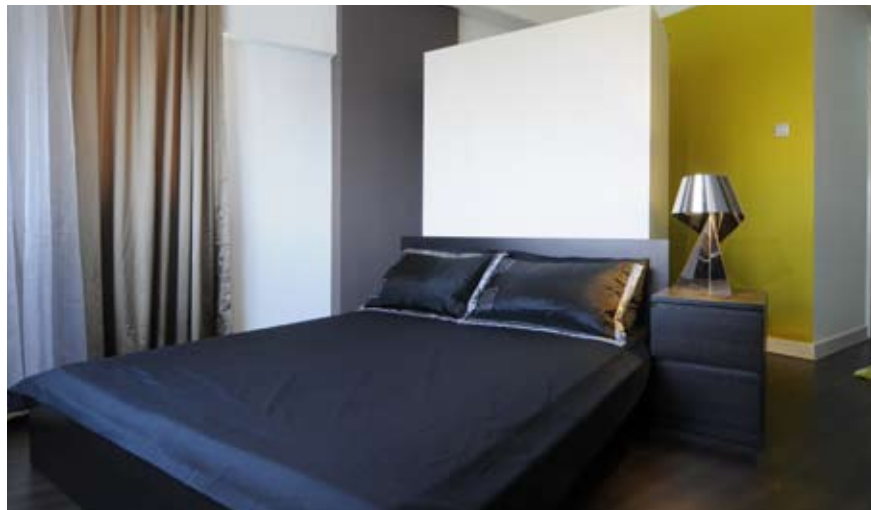
FIRST FLOOR



GROUND FLOOR







Bold tones, used a 'pop' items are able to bring life and sophistication in any monotone spaces.



**INTERIOR DESIGN FIRM**  
DREAM HOME LAND SDN BHD



**DREAM HOMES LAND SDN BHD**

**TEL**  
+603 6142 7188  
**FAX**  
+603 6142 7166  
**EMAIL**  
blainerobert.dhl@gmail.com  
**WEBSITE**  
www.dreamhomesland.com

**PROJECT NAME**  
SKY  
**INTERIOR DESIGNER**  
BLAINE ROBERT  
**ARCHITECT**  
AK2 PERUNDING SDN BHD  
**DEVELOPER**  
LAND & GENERAL  
**BUIDER & RENOVATION WORKS**  
DREAM HOMES LAND S/B  
**LANDSCAPING**  
DREAM HOMES LAND S/B  
**CEILING**  
EXISTING CEILING  
**PAINT**  
NIPPON PAINT (SMOKY GRAY & BRILLIANT GREEN)

**FLOORING MATERIAL**  
WALNUT LAMINATE FLOORING & WALNUT HARDWOOD FLOORING  
**LIGHTING**  
DOWN LIGHTS, DESIGNER SPOT LIGHTS & DESIGNER PENDANT LIGHTS  
**FURNITURE**  
DREAM HOMES LAND SOFA DESIGNS  
**SOFT FURNISHING**  
DREAM HOMES LAND CURTAIN  
**INSTALLATION**  
FEATURE SMOKE GRAY MIRRORRED TV WALL UNIT  
**HOME ACCESSORIES**  
DREAM HOMES LANDS ARTWORK  
**KITCHEN APPLIANCES**  
LG APPLIANCES  
**POWER OUTLET SYSTEM**  
MATTE FINISH SILVER SWITCH  
**ENGLISH TEXT BY**  
BLAINE ROBERT  
**PHOTOGRAPHY BY**  
GAVIN YAM